

APE NEW PRODUCTS Liberty Series Split Vision Rework Systems

The Liberty series Bandit (110V) and Sharpshooter (220V) are, simple to operate, Vision Placement rework machines that include a Temperature Profile Controller. Machines may be configured as a single Top Heater reflow system or with an integrated Bottom Heater. The Liberty series is designed for flexibility and for a budget conscious user not requiring the sophistication of more complex temperature profiling. The system is also available as a Vision Placement system only.

Liberty Series

The Bandit 110V and Sharpshooter 220V are identical machines that include a manual component placement arm with a final precision touch-down stage. The Liberty series is designed for board sizes up to 14" x 16."

XY Table

The basic model 7500-1000 is equipped with a free standing 8" x 12" Frame Board Holder with a Teflon coated base for easy positioning. The model 7500-1500 includes the same Frame Board Holder but mounted on linear rails.

Profile Storage Controller

A dual system of PID Profile Storage Controllers are provided for high throughput repair conditions. These simple to use controllers optimize performance, providing soak and ramp without a computer add on.

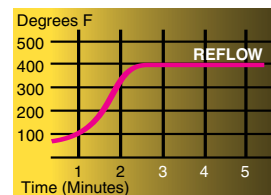
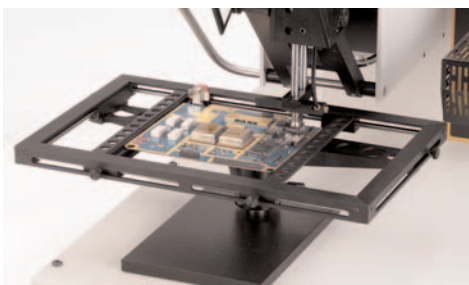
Microprocessor Top Reflow and Bottom Pre-Heat Controllers are electrically coupled and include Integrated Digital Timers, Digital Closed-Loop sensing and an optimum process with repeatability <2% of set point temperature °F and °C selectable



Order Information

Liberty series

Part #	Description
7500-1500	Bandit Top/Bottom Heat 110V 60Hz
7500-1502	Sharpshooter Top/Bottom Heat 220V 50Hz
7500-1000	Bandit Top Heat only 110V 60Hz
7500-1002	Sharpshooter Top Heat only 220V 50Hz
7500-0250	Bandit vision system only 110V 60Hz
7500-0252	Sharpshooter vision system only 220V 50Hz
8100-1416	Optional Frame Board Holder 14" x 16"



Liberty Series Specification:

Power Top Heater	110-220V 1200 Watts
Power bottom Heater	600 Watts
Current	25 Amps @ 110V, 15 Amps @ 220V
Dimension	21.75" x 29.12" (552 x 740 mm)
Standard Board Holder	Frame 8" x 12" (203 x 304 mm)
Reflow Nozzles included	Three Nozzles of Choice
Preheat Nozzles included	Two included
Temperature	Select Celsius or Fahrenheit
Reflow Air Velocity	Internal Motor <12.7 CFM
Component Pick Up	Internal Pump -Shop Air option
Controller	On Board PID Computers
Monitor for Lightning	13" Color Display
Board Alignment	Micrometer Controls
Reflow Operation	Close Loop
Weight	125 lb (56.81kg)